



DJ PROMIXER



COMPATIBLE HARDWARE



**NUMARK NDX 900
AUDIO & MIDI IMPLEMENTATION**

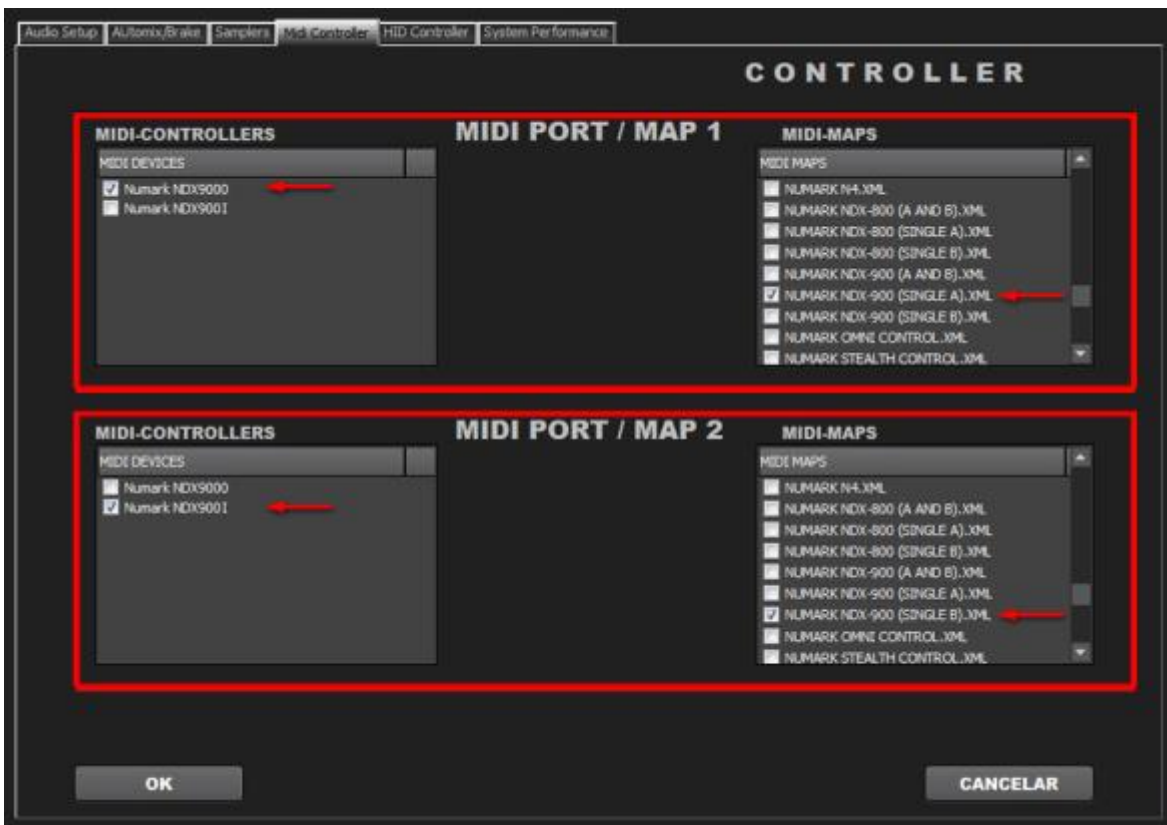
HOW TO SET UP?

The system must recognize your Numark NDX-900 device/s before configuring in DJ ProMixer.

IMPORTANT: Numark NDX-900 is a MIDI and audio sound card device

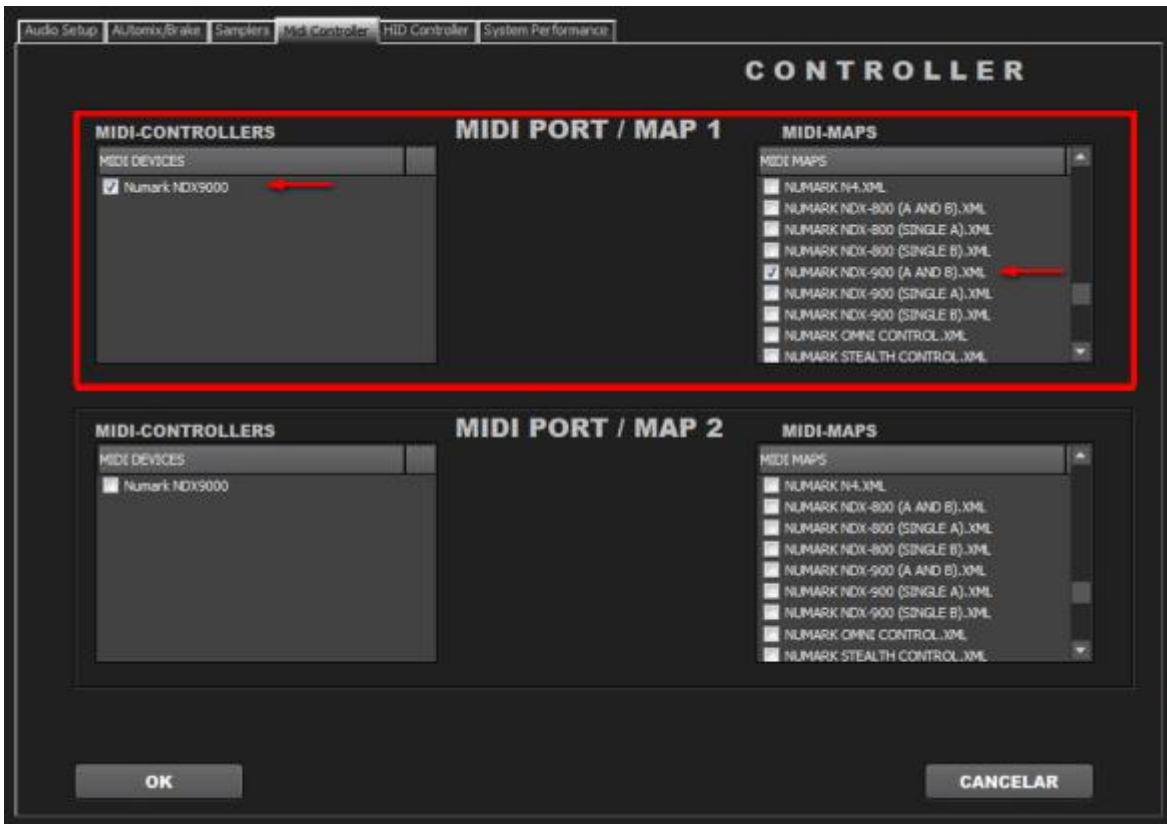
MIDI CONFIGURATION

Single Mode (2 Numark NDX-900 Connected)



Select in MIDI PORT / MIDI MAP 1 on the left side one device (Numark NDX900 0) and select on the right side NUMARK NDX-900(SINGLE A).XML. Select in MIDI PORT / MIDI MAP 2 on the left side the other device (Numark NDX900 1) and select on the right side NUMARK NDX-900(SINGLE B).XML

Dual Mode



Select in MIDI PORT / MIDI MAP 1 on the left side Numark NDX900 0, and select on the right side NUMARK NDX-900 (A AND B).XML. Nothing selected in MIDI PORT / MIDI MAP 2 How to change the decks? Two ways: 1.- Hardware: Use the "Eject Button". 2.- Software: By clicking the headphone button of the deck.



AUDIO CONFIGURATION

Open DJ ProMixer and go to "Config", open "Audio Setup", here you can select your Numark NDX-900 as Audio Sound Card.



MIDI MAP



- 1.- PLAY
- 2.- PAUSE
- 3.- CUE
- 4.- CHANGE FOCUS PLAYLIST / GROUPS-SUBGROUPS / EXPLORER
- 5.- SCROLL / LOAD / ENTER
- 6.- CHANGE FOCUS THREE / TRACKLIST
- 7.- REVERSE / BRAKE
- 8.- MANUAL LOOP (IN – OUT – EXIT / RELOOP) DIRECT AUTO LOOP (IN / EXIT) (STARTS IN 4 BEATS)
- 9.- AUTOLOOP FROM ¼ TO 32 BEATS (STARTS IN 4 BEATS)
- 10.- SEARCH (WHEEL MODE)
- 11.- CUE / LOOP MEMORY (1, 2, 3) (NORMAL MODE) / SAMPLES (1, 2, 3 WITH SAMPLER BUTTON ACTIVATED)
- 12.- SAMPLER MODE ON / OFF
- 13.- MEMORIZE CUE / LOOP
- 14.- KEYLOCK
- 15.- PITCH
- 16.- PITCH BEND
- 17.- SYNC
- 18.- FX 1 (ECHO) LEFT (ON) CENTER (OFF) - FX 2 (FLANGER) RIGHT (ON) CENTER (OFF)
- 19.- FX 3 (WAH)
- 20.- FX DRY / WET
- 21.- FX PARAMETER
- 22.- BEND (WHEEL)
- 23.- SCRATCH (WHEEL)
- 24.- DECK VOLUMEN
- 25.- HEADPHONES VOLUMEN
- 26.- DECK SELECTOR (DECK A / DECK B) (ONLY DUAL MODE)
- 27.- LINK TO PC (SOURCE)

More info about DJ ProMixer:

<http://www.djpromixer.com>